

Although descriptions are believed correct at publication approval, accuracy cannot be guaranteed.

Moen reserves the right to make product specification changes from time to time, without notice or obligation, and to change or discontinue models.

® Camerist, Colonnade, Extensa, Integra, LifeShine, Moen, Salora, Vestige, the Moen *Buy it for looks. Buy it for life.* logo, the LifeShine logo and the Moen waterdrop design are Registered Trademarks of Moen Incorporated.

™1255, 90°, Aberdeen, Arbor, Duralast and Level are Trademarks of Moen Incorporated.

© Moen Incorporated 2010
U.S. Headquarters:
Moen Incorporated
25300 Al Moen Drive, North Olmsted, OH
44070-8022

1-800-BUY-MOEN

Canada Headquarters:
Moen Inc.
2816 Bristol Circle, Oakville, Ontario L6H 5S7

1-800-465-6130



Visit our web site at www.moen.com



Printed with Soy based inks.

MF3235 25M-11/10-WYCG



KITCHEN Inspirations

Design ideas for your kitchen featuring Moen® faucets



LIVE-IN KITCHEN

An open space designed to accommodate activities from preparing meals, to online bill payments, to socializing over coffee suits today's multifaceted lifestyle.

The transitional styling of this kitchen matches the flexible functionality of the space. Contemporary touches like floating shelves and Scandinavian dining chairs balance the traditional, raised-panel oak cabinets. A liberal use of natural materials keeps the space warm.

The long peninsula serves many purposes. An ample work surface is located within easy reach of the wall of floor-to-ceiling storage for convenient food preparation, while the side opposite the sink is cantilevered to offer seating for four or more. Additionally the peninsula defines the work zone from the gathering spaces in this open floor plan.



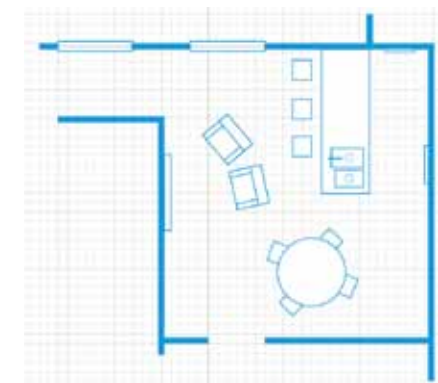
Multifunction spray heads have up to three functions, including aerated stream, pause and power rinse.



Faucet: Moen Arbor (7594CSL)
Appliances: Frigidaire
Countertop: Cultured Marble
Bar Stools: Garden Ridge

MARTIN'S NOTE:

"In this space, the faucet, sink, appliances and cabinet hardware all share a stainless steel finish. Coordinating finishes unify individual areas and contribute to the organized feeling."



Space adjacent to the kitchen offers several ways to gather, including counter-height bar stools, an eat-in dining table and a pair of armless wing back chairs.

Matching BAR/PREP Faucets



ADDING a second sink is a smart idea for kitchens with two cooks and households that frequently entertain. This prevents congestion around the main sink by creating a separate prep station or a beverage center complete with running water. Look for kitchen faucet models that also offer coordinating bar/prep faucets—particularly when both sinks are located in the same room.



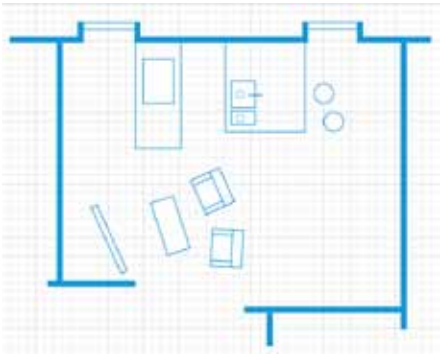
Faucet: Moen Level (7100)
Dishwasher: Whirlpool
Countertop: White Cultured Marble
Barcelona Chairs: Knoll, Inc.

CONTEMPORARY COZY

This kitchen proves that the right mix of materials can make a pure contemporary design feel comfortable and inviting.

With a single glance, one can quickly spot the modern influences in this design. From the minimalist geometry of the Level single-handle faucet to the oversized white countertops with industrial aluminum supports and a custom stainless steel hood suspended above the cooktop, this kitchen is clean and uncomplicated.

But on further inspection, the space exudes an understated warmth that comes from carefully chosen finishes and materials. Instead of a glossy lacquered paint, cabinets feature a light tone oak veneer to add a natural element. A orange accent wall balances the cool gray floors. Even the supple leather upholstery of the quintessentially modern Barcelona chairs contributes to the soft richness of the room.



Twin peninsulas offer ample workspace in this layout. NKBA recommends at least 48" of aisle width for two people to work in the kitchen simultaneously.

STAINLESS Steel Sinks



SINKS ARE OFTEN overshadowed by cabinet, countertop and flooring choices. But remember that you spend more time at your sink than any other area of your kitchen, so choosing a sink to meet your needs is important.

Moen offers a growing selection of quality stainless steel sinks in a broad range of shapes, sizes and configurations. All feature state-of-the-art SoundSHIELD™ undercoating for exceptionally quiet service.

For more information, ask your showroom consultant for a copy of our Sink Buying Guide or visit moen.com to view all available sink models and sizes.

MARTIN'S NOTE:

“By mixing in a few decorative items, like these ochre glazed vases, you can transform an otherwise utilitarian shelf into an attractive display.”

WHITE HOT

Dramatic contrast and crisp horizontal lines make a sizzling statement in this contemporary kitchen.

White is a favorite choice for a kitchen because it is clean and open. But done without care, white can also be flat, cold and antiseptic.

Here, shades of gray wall paint set off the pure white European cabinets and floors, creating dimension that better defines the space. A contrasting black countertop and Arabesca marble tile add elegance without disrupting the minimalist design, while a punch of bright color injects bold personality.

From the flickering flames in the fireplace to the sunshine pouring in the large unadorned window, light is a key element. A chrome finish on the 90° faucet adds reflective sparkle.

MARTIN'S NOTE:

"The faucet is clearly the featured focal point on this central island. Sleek, linear styling reflects other architectural elements in the room and turns a functional item into an artistic element."

PULLOUT Faucets



BY INTEGRATING side spray features into the spout of the faucet, pullout faucet designs offer extended versatility along with the added advantage of a clean, uncluttered look on the countertop.

Moen pullout faucets offer a combination of useful features designed to make your experience in the kitchen easier and more rewarding including:

Smooth, Comfortable Movement

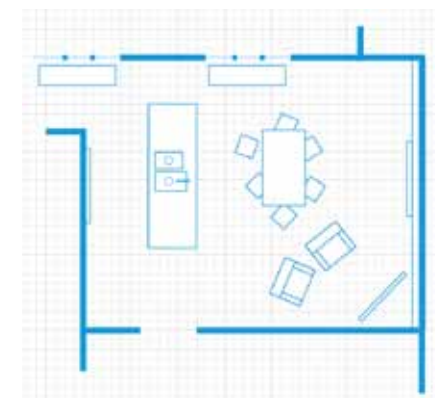
All pullout faucets feature a swivel ball joint at the wand and hose junction that pivots easily to provide increased comfort and range of motion.

Multifunction Spray Options

Choose from up to three functions, including aerated stream, powerful rinse and pause feature.

Secured Docking

An innovative design keeps the spray wand docked tightly in the spout for a secure connection that will not loosen with repeated use.



Locating the sink in the middle of the island creates ample work space on either side and provides a great view of the elevated fireplace directly across the room.

Faucet: Moen 90° (7597C)

Tile: Arabesca Marble

Dining Chairs: Sitcom Furniture Rae Side Chair



Faucet: Moen Aberdeen
(7590CSL)

Cabinets: Kemper
by MasterBrand

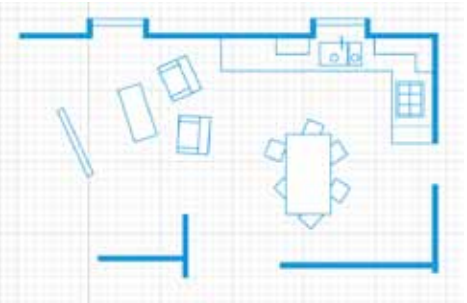
Dining Chairs: West Elm
Circle-Cutout

CONTRASTING TRADITIONS

This L-shaped kitchen proves traditional design doesn't have to follow all the rules.

The designers of this kitchen saw beyond the contemporary architectural elements of the raw space. Instead of choosing modish cabinets and fixtures to match the vaulted ceiling and progressive placement of four rectangular windows in the gable wall, traditional cabinets and formal touches bring the kitchen to life. To keep the look from becoming too staid, white upper cabinets are paired with dark chocolate-stained lower units. Gray tones of the polished granite counters and matching full-height backsplash tie the opposing finishes together. Frosted glass doors contribute to the airy feel of the space.

Proper lighting is essential in any kitchen. Here a blend of task lighting below the upper cabinets, general lighting from recessed ceiling fixtures and ambient light from chandeliers augments daylight from the window.



An Aberdeen faucet is the perfect pairing for this space because the classic styling houses advanced features and functionality such as a pulldown multifunction spray wand.

HIGH ARC Spout



THE Moen Aberdeen faucet has a generous spout height. Like other high arc models from Moen, this design provides hassle-free access to the sink for food prep and cleaning tasks. When paired with a deep sink bowl, even your largest pots and pans will easily fit under the spout. A great feature to consider for cooks and cleanup crew alike.

Soap/Lotion Dispensers
Consider mounting a coordinating soap/lotion dispenser next to your faucet for added convenience. Choose from several different styles in finishes to match your faucet.

MARTIN'S NOTE:

"In this kitchen, the red wall really punches up the space and draws attention to the high ceiling. A floral arrangement and dishes displayed behind the frosted glass doors bring the color down into the room."

GET A GRIP ON HANDLE OPTIONS



Vestige single-handle with side spray (7065PW)



Vestige two-handle bar/prep (5994PW)

As with the Vestige collection shown here, you'll find a variety of Moen styles that offer single-handle and two-handle options to accommodate your preferences and the number of holes in your sink or countertop. Here are a few thoughts to help you decide which is right for you.

Single-Handle

- quickly and precisely adjust water flow and temperature using a single motion
- easy, one-handed use—great for dirty or soapy hands
- provides a clean, uncluttered appearance
- mounting flexibility—many single-handle models can be conveniently mounted with the handle on the left or right side to match your personal preference

Two-Handle

- ability to control hot and cold water flow independently
- provides precise temperature and water flow adjustment



Vestige two-handle with side spray (7068CSL)

1255™ DURALAST™ CARTRIDGE

EXPERIENCE THE DIFFERENCE

All single-handle kitchen faucets shown in this brochure feature the 1255™ Duralast™ cartridge that is designed to offer consistently smooth handle feel and leak-free durability for the life of the faucet.



THE FINISH COMPLETES THE FAUCET



Arbor bar/prep faucet in Oil Rubbed Bronze (5995ORB)

Moen offers nearly a dozen desirable finish options including polished and brushed finishes as well as those designed to match popular appliances and cabinet hardware finishes such as stainless steel and oil rubbed bronze.

You never have to worry about a LifeShine® finish. You get the beauty of the latest decorator-inspired finishes with the durability of chrome. Guaranteed not to tarnish, corrode or flake off. Ask your showroom consultant or visit moen.com to find faucets available in LifeShine finishes.

FINISH OPTIONS



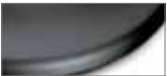
Chrome



LifeShine® Classic Stainless



Oil Rubbed Bronze



Matte Black



Pewter



Glacier



MORE AT
moen.com



Still Undecided?

Visit the Faucet Selector tool at moen.com and answer a few basic questions about your project and preferences. With just a few clicks, you can narrow in on a faucet that perfectly matches your style, budget and more. It's a great way to start your search or confirm the faucet you selected meets your needs.

Ready to Buy?

If you've fallen in love at first sight, you can purchase any the faucets shown here at a showroom near you. Use the Where To Buy tab at moen.com to find a Moen Showroom of Distinction in your area.

CAMERIST®



Single-handle
pullout / 7545CSL



High arc
single-handle
pullout / 5955CSL



High arc
single-handle /
4905CSL



Single-handle /
7825CSL



Single-handle with
side spray / 7840CSL



Single-handle with side
spray in deckplate /
7835CSL

EXTENSA®



Single-handle pullout / 7560CSL

COLONNADE®



Single-handle pullout / 7575CSL

INTEGRA®



Single-handle pullout / 67315CSL

SALORA®



Loop handle pullout / 7570CSL

KITCHEN Inspirations

MEET MARTIN AMADO



Throughout the following pages, you'll find insights from home décor and lifestyle expert Martin Amado. In addition to owning his own home styling company, Martin shares his design experience across many media platforms, and has appeared as an HGTV host and designer on *Small Space, Big Style* and *Decorating Cents* programs. He is currently the designer on the Spanish-language network program *Decorando Contigo*. You can find additional tips from Martin by viewing the Moen Makeover videos at youtube.com/moenfaucets

 **MOEN**
Buy it for looks. Buy it for life.®

KITCHEN Inspirations

A LEGACY OF TRUSTED PERFORMANCE

The beauty of a Moen faucet goes beyond attractive design. For more than six decades, Moen has developed meaningful design innovations that improve performance and enhance your experience in the kitchen. This rich tradition of innovation began with the invention of the single-handle cartridge and continues to progress into new and exciting advancements that focus on improving reliability, functionality and ease of installation.



Plus, Moen products are manufactured to high standards

of quality and workmanship. Each is backed by a Limited Lifetime Warranty against leaks, drips and finish defects.

MOEN
Buy it for looks. Buy it for life.®

ARBOR™



High arc
single-handle
pulldown / 7594CSL



Single-handle
with side spray /
7790CSL



Bar/prep
with pulldown /
5995CSL

ABERDEEN™



High arc
single-handle
pulldown / 7590CSL



High arc
two-handle
pulldown / 7592CSL

LEVEL™



Single-handle
pulldown /
7175CSL



Single-handle
with side spray /
7106CSL



Single-handle /
7100CSL

VESTIGE®



Single-handle
with side spray /
7065CSL



Two-handle
with side spray /
7068CSL



Two-handle
bar/prep /
5994CSL

90°™



Single-handle
pullout / 7597CSL



Single-handle /
7170CSL

MEDORA®



Single-handle
pulldown / 7599CSL